



**MOUNT
ROGERS**

REGIONAL PARTNERSHIP



Work Based Learning **Building Your Talent Pipeline**

2024 Business Success Symposium

Benefits to Employers

- ✔ Streamline recruitment
- ✔ Improve employee retention
- ✔ Reduce training/recruitment costs
- ✔ Collaboration with educational and training programs
- ✔ Close the skills gap and create a prepared workforce
- ✔ Gain insights into and from emerging talent

Types of Work Based Learning

- 🛡 Job Shadowing
- 🛡 Internships
- 🛡 Apprenticeships
- 🛡 Cooperative Work Experience
- 🛡 Incumbent Worker Training or Upskilling



Job Shadowing

Job shadowing is observing a day in the life of someone else's role.

- 🛡️ Observe how software, technology, machinery is used
- 🛡️ Sit in on meetings
- 🛡️ Assist with minor administrative tasks
- 🛡️ Tour office and/or facility
- 🛡️ Review projects or other work materials
- 🛡️ Unpaid
- 🛡️ Short term – a day to a few weeks

Internships

Form of experiential learning that integrates knowledge and theory learned in the classroom with practical application and skills development in a professional workplace. – *NACE*

- 🛡️ Hands-on work experience
- 🛡️ Complete short-term project
- 🛡️ Perform entry level tasks
- 🛡️ Most are paid
- 🛡️ 1-3 months



Apprenticeships

Combine on-the-job training with classroom instruction.

- 🛡️ Hands-on work experience
- 🛡️ Structured training plan
- 🛡️ Individualized training with a specific skill
- 🛡️ Often lead to industry-recognized credential
- 🛡️ Most are paid
- 🛡️ 1-3 years

Cooperative Education

Connects career and technology education with classroom instruction and practical work experience.

- 🛡 Hands-on work experience
- 🛡 Collaboration between business, school, and student
- 🛡 Students earn high school graduation credit (280 hours)
- 🛡 Paid
- 🛡 Throughout 1 school year

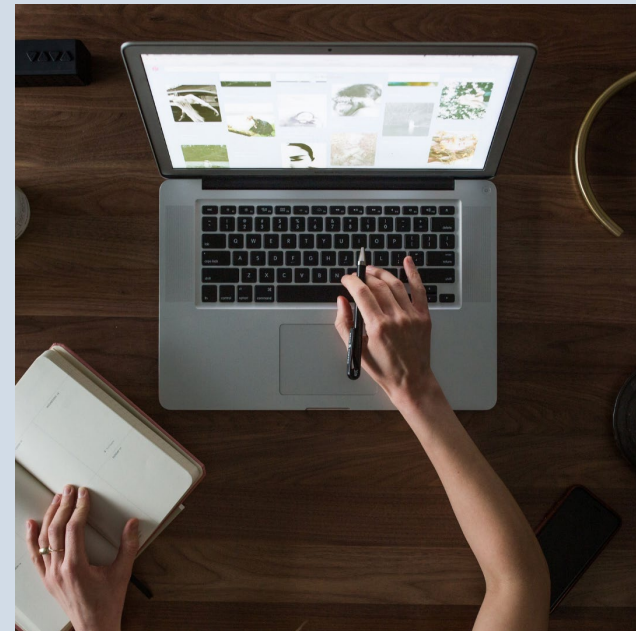
Incumbent Worker Training/Upskilling

Trains current employees at their worksite using the company's skilled employees or external experts as instructors.

- 🛡️ Hands-on work experience
- 🛡️ Strengthens existing workforce
- 🛡️ Paid
- 🛡️ Several weeks to months

Get Started with Work Based Learning

- 🛡️ Determine your goal
- 🛡️ Designate mentors/instructors
- 🛡️ Develop training plan
- 🛡️ Determine what resources are needed
- 🛡️ Develop program assessment



Resources

- 🛡️ [Employers - Virginia TOP](#)
- 🛡️ www.apprenticeship.gov
- 🛡️ www.virginiaworks.gov
- 🛡️ [Work-Based Learning | CTE Resource](#)
- 🛡️ www.peopleinc.net



Rebecca Fisher

Director of Talent Solutions and
Business Engagement

rfisher@wcc.vccs.edu

(276)223-4709

QUESTIONS?



**MOUNT
ROGERS**
REGIONAL PARTNERSHIP



MOUNT ROGERS REGION
Make it here